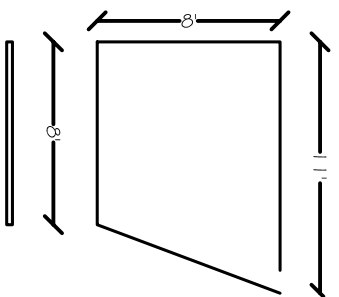


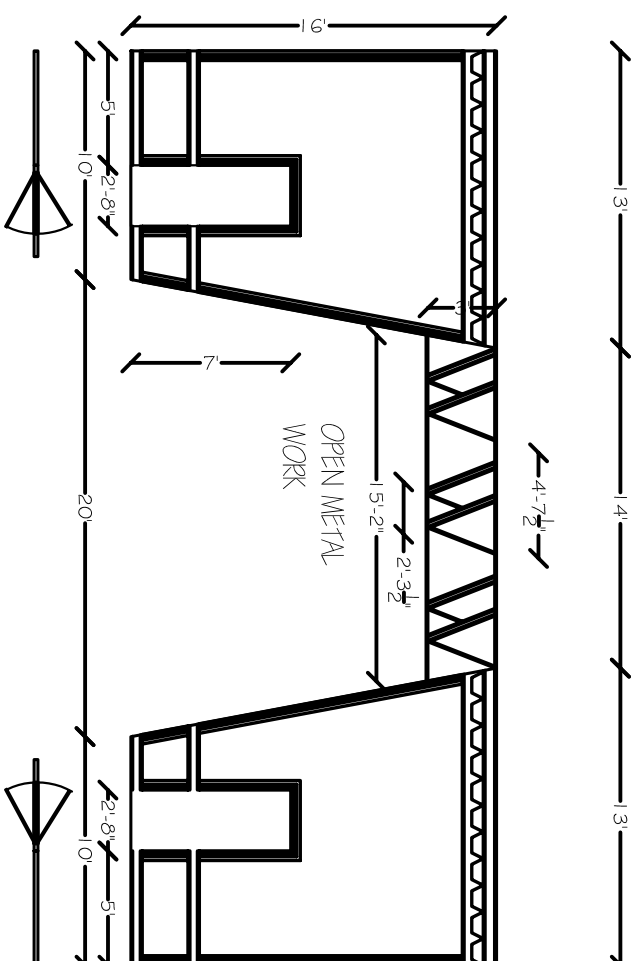
**BACKING**

FLAT RECESSES BASE BOARD, QUARTER ROUND MOLDINGS, AND VERTICAL MOLDINGS



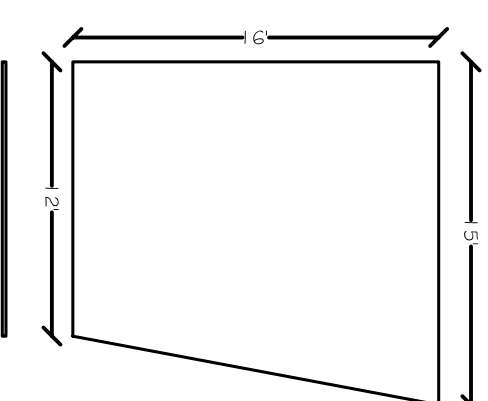
**FINCH OFFICE 1**

FLAT PLAN - NO MOLDINGS CAN BE SOFT COVERED



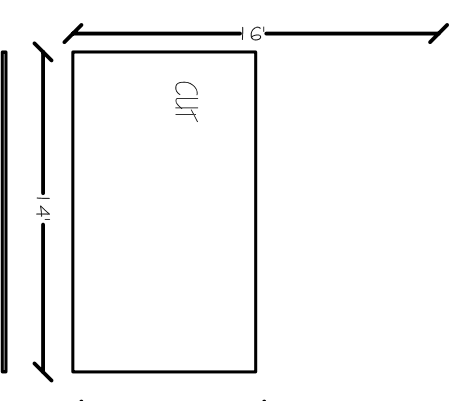
**MID STAGE DOORS**

FLAT RECESSES BASE BOARD, QUARTER ROUND MOLDINGS, AND VERTICAL MOLDINGS (INC. DOORS)



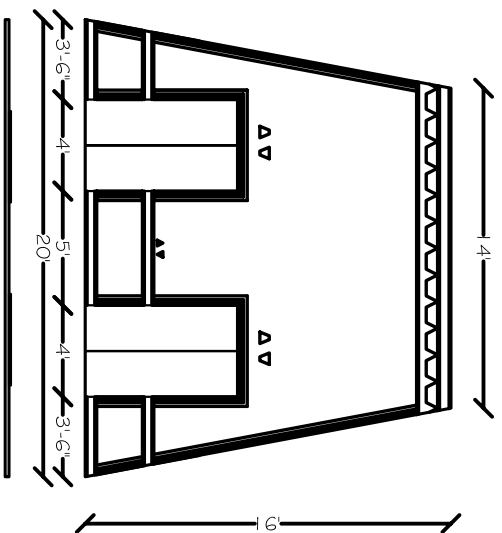
**MAIL ROOM**

FLAT SHOULD BE NO-REASONABLY COVERED. NEED NOT BE SOLID. CHAIN-LINK WOOD SLATS, BRICKWORK, COLE P.V.C. PIPE -- LETS SEE WHAT YOU HAVE LAMINATED AROUND THE 90° -- FITS THE FIT OF TELL (MEMORABLY SPENDING)



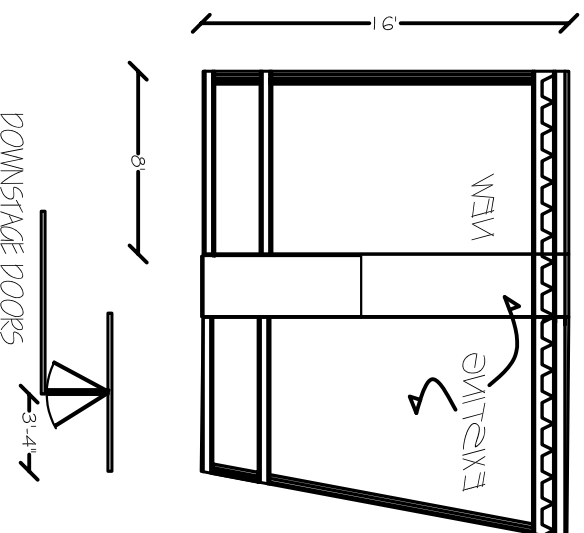
**ELEVATOR BACKING**

COVERED IN PAPER? OR WORKLESS PAINT TREATMENT



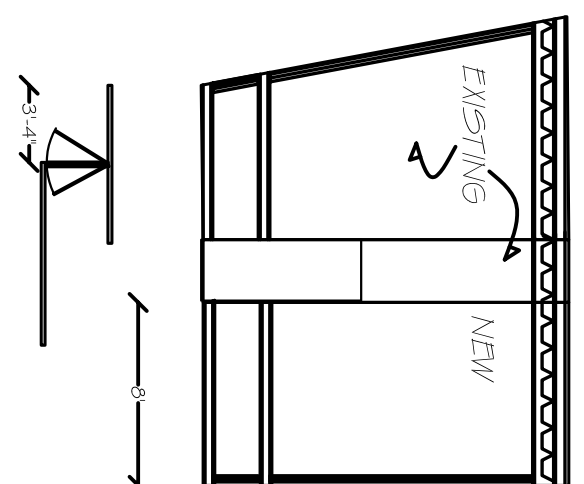
**ELEVATOR**

FLAT RECESSES BASE BOARD, QUARTER ROUND MOLDINGS, AND VERTICAL MOLDINGS (INC. DOORS) OPEN AT CENTER



**DOWNSTAGE DOORS**

FLAT RECESSES BASE BOARD, QUARTER ROUND MOLDINGS, AND VERTICAL MOLDINGS (NOT DOORS) ELEVATORS AT LATTER END ELEVATION ON STAGE FLAT THE DOOR FLAT BEHIND IT. MOLDING SHOULD BE ADDED WHEN FULLY ASSEMBLED SO LITTLE PREPARMS ON DOWN STAGE AND CORNERS.



FLAT RECESSES BASE BOARD, QUARTER ROUND MOLDINGS, AND VERTICAL MOLDINGS (NOT DOORS) ELEVATORS AT LATTER END ELEVATION ON STAGE FLAT THE DOOR FLAT BEHIND IT. MOLDING SHOULD BE ADDED WHEN FULLY ASSEMBLED SO LITTLE PREPARMS ON DOWN STAGE AND CORNERS.

How to Succeed in Business Without Really Trying  
 U.S.C. SCHOOL OF THEATRE: BING THEATER  
 MAJOR WALLS  
 DIRECTED BY KELLEY WARD  
 DESIGNED BY C. R. BOLITZ  
 DRAFT: GRB  
 DATE: FEB 16, 2002  
 SCALE: 1/4" = 1'-0"  
 PLATE: OF